



# BEVERAGE-AIR

PO Box 5932, Spartanburg, SC 29304  
1-888-845-9800 Fax# 1-864-582-5083  
<http://www.Beverage-Air.com>

## Commercial Refrigeration Equipment General Specification

### DIRECT DRAW DISPENSERS

Direct Draw Beer Dispensers are available in 5 self-contained models up to 5 kegs capacity. Three models are available as club top (DD50C, DD58C, DD68C) for glasses, cans or bottles storage beneath an easy glide stainless steel lid. One size self-contained, end mount model (DD78E) and two remote models (DD58R and DD78R) complete the series of direct draws.

### CABINET CONSTRUCTION

Standard, cabinet exterior construction includes attractive, wear resistant vinyl on steel in black exterior finish. Top is made from heavy-duty stainless steel including drip tray(s) for easy cleaning.

Doors are self-closing and include key locks. Magnetic gaskets provide positive door sealing.

Standard interior construction utilizes galvanized steel walls and ceiling. Reinforced floor and door sills are made from heavy-duty stainless steel to provide long lasting service.

Foamed-in-place CFC and HCFC-free polyurethane insulation enhances the structural strength of the cabinet and helps increase energy efficiency.

Three-inch (3") insulated towers are provided. Towers are adapted to have a continuous source of cold air channeled into it to keep beer at its coldest, best quality the moment it is dispensed.

### REFRIGERATION

Models feature forced air refrigeration to keep beer in kegs ice cold for dispensing. Refrigeration system uses R134a refrigerant, which is CFC and HCFC-free for compliance with environmental safety concerns.

### ELECTRICAL

Units wired at factory and ready for connection to a 115/60/1 phase, 15 amp dedicated outlet. 8' long cord and plug set included.

### SPECIAL FEATURES

- Stainless options available
- 3 Club Top models available

Item No. \_\_\_\_\_

Quantity \_\_\_\_\_

## DRAFT BEER EQUIPMENT DIRECT DRAW DISPENSERS DD SERIES

**MODELS:**  
 DD50/DD50C  
 DD58/DD58C/DD58R  
 DD68/DD68C  
 DD78/DD78E/DD78R  
 DD94



DD50



DD68C



DD94

Available From:



\*Note: Not all markings may apply to all model variations.

Model Specified \_\_\_\_\_ Store# \_\_\_\_\_  
 Location \_\_\_\_\_ Quantity \_\_\_\_\_



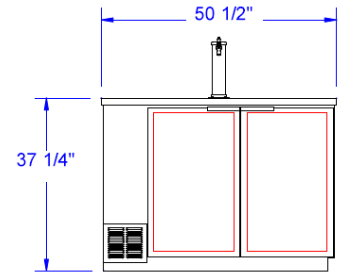
**ELECTRICAL CONNECTION**  
 Units pre-wired at factory and include 8' long cord and plug set.



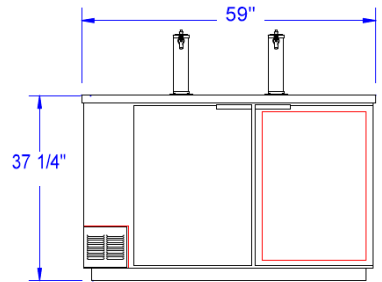
**Direct Draw Dispensers**  
 Models: DD50, DD50C, DD58, DD58C, DD58R, DD68, DD68C, DD78, DD78E, DD78R, DD94

MODEL	DD50	DD50C	DD58	DD58C	DD58R	DD68	DD68C	DD78	DD78E	DD78R	DD94
<b>EXTERNAL DIMENSIONAL</b>											
Length Overall (inches)	50 1/2"	50 1/2"	59"	59"	59"	69"	69"	79"	92 1/2"	79"	95"
Length Overall (mm)	1283	1283	1499	1499	1499	1753	1753	2007	2350	2007	2413
Depth Overall (inches)	28 3/16"	28 3/16"	28 3/16"	28 3/16"	28 3/16"	28 3/16"	28 3/16"	28 3/16"	28 3/16"	28 3/16"	28 3/16"
Depth Overall (mm)	716	716	716	716	716	716	716	716	716	716	716
Height Overall—(inches)	37 1/4"	38 3/4"	37 1/4"	38 3/4"	37 1/4"	37 1/4"	38 3/4"	37 1/4"	37 1/4"	37 1/4"	37 1/4"
Height Overall—(mm)	946	984	946	984	946	946	984	946	946	946	946
Depth with door open (inches)	46 3/4"	46 3/4"	50 9/16"	50 9/16"	50 9/16"	50 9/16"	50 9/16"	50 9/16"	50 9/16"	50 9/16"	50 9/16"
Number of doors	2	2	2	2	2	2	2	3	3	3	3
<b>INTERNAL DIMENSIONAL</b>											
NET Capacity (cubic ft.)	19.8	19.8	23.7	23.7	24.6	28	28	32.3	34.2	33.3	39.2
NET Capacity (Liters)	561	561	671	671	697	793	793	915	968	943	1110
Internal Length Overall (inches)	46 1/2"	46 1/2"	55"	55"	55"	65"	65"	75"	75"	75"	91"
Internal Length Overall (mm)	1181	1181	1397	1397	1397	1651	1651	1905	1905	1905	2316
Internal Depth Overall (inches)	23"	23"	23"	23"	23"	23"	23"	23"	23"	23"	23"
Internal Depth Overall (mm)	584	584	584	584	584	584	584	584	584	584	584
Internal Height Overall (inches)	32"	32"	32"	32"	32"	32"	32"	32"	32"	32"	32"
Internal Height Overall (mm)	813	813	813	813	813	813	813	813	813	813	813
Number of Kegs (straight wall)	2	2	3	3	3	3	3	4	5	5	5
<b>ELECTRICAL DATA</b>											
Full Load Amperes 115/60/1	7.4	7.4	7.4	7.4	.5	7.4	7.4	7.4	7.4	.5	7.4
<b>ENERGY CONSUMPTION</b>											
	3.69	3.69	4.37	4.37	n/a*	3.55	3.55	4.02	4.02	n/a*	4.8
<b>REFRIGERATION DATA</b>											
Horsepower	1/3	1/3	1/3	1/3	remote	1/3	1/3	1/3	1/3	remote	1/3
<b>WEIGHT DATA</b>											
Gross Weight (Crated lbs)	286	304	302	329	266	364	382	400	420	335	426
Gross Weight (Crated kg)	130	138	137	149	121	165	173	181	191	152	193

**PLAN VIEWS**

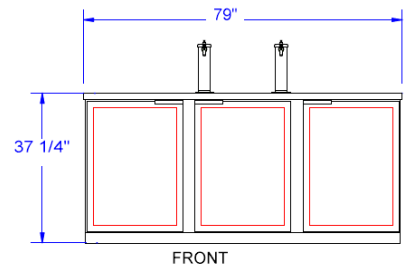


FRONT VIEW  
DD50



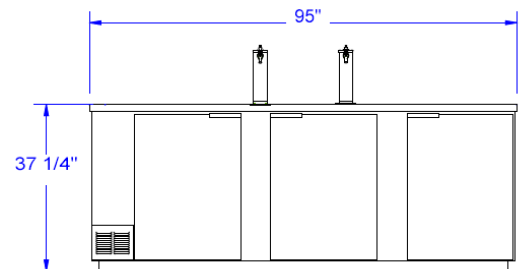
FRONT VIEW  
DD58

DD78

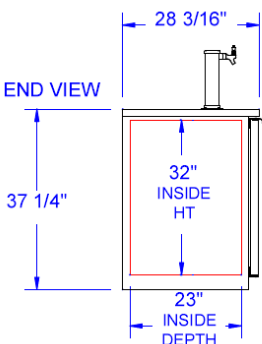


FRONT

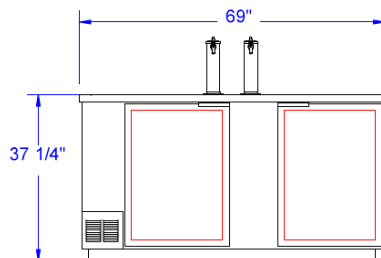
DD94



FRONT



COMMON END VIEW



FRONT  
DD68

\*Note: Not all markings may apply to all model variations.  
 \*N/A: Not available at time of printing.



**BEVERAGE-AIR® CORPORATION**

700 Buffington Road • PO Box 5932 • Spartanburg, SC 29304 USA • (864) 582-8111 • Fax (864) 582-5083 • (888) 845-9800 • www.beverage-air.com

Specifications are subject to change without prior notice. 07/09