



# BEVERAGE-AIR

3779 Champion Blvd., Winston-Salem, NC 27105  
1-888-845-9800 Fax# 1-336-245-6453  
<http://www.Beverage-Air.com>

## Commercial Refrigeration Equipment General Specification

### UCRD SERIES—32" DEPTH

Versatile, compact (32" depth) models for under the counter refrigerated storage of food products. Working height is 34 1/2".

### CABINET CONSTRUCTION

Heavy duty construction includes exterior stainless steel on front, sides, door(s) and grille. Cabinet back and bottom are galvanized steel. Interior liner is made of corrosion resistant anodized aluminum. Interior thermometer is standard.

In cabinets with doors and drawers, doors are mounted to face of cabinet on cartridge-style hinges permitting them to self close under their own weight. Hinges also allow doors to stay open 120° and permit easy door removal for service and cleaning if required. A plug-in type vinyl magnetic gasket is attached to each door for positive seal.

Cabinet insulation is CFC and HCFC-free foamed-in-place polyurethane of two-inch minimum thickness. 6" high casters are standard, 2 include brakes.

### DRAWER CONSTRUCTION

Drawer frames are constructed of heavy-duty stainless steel and are supported on heavy-duty telescoping drawer slides for maximum support of stored food products. Slides have locking mechanism to prevent from drawers being pulled off of cabinets. Upper pull-out drawers accommodate 6" deep pans. Lower pull-out drawers accommodate two 4" deep pans. Heavy-duty pan divider supports are supplied. Foodservice pans for drawers are not included. Snap-type vinyl magnetic gasket is attached to each drawer for positive seal. Drawers extend 23" (when opened).

### REFRIGERATION

Refrigeration system utilizes R134a refrigerant governed by a capillary tube system. Automatic (non-electric) condensate evaporator is provided. Interior forced-air system with high humidity evaporator coils, provides the ideal environment for food preservation.

### ELECTRICAL

Units wired at factory and ready for connection to a 115/60/1 phase, 15 amp dedicated outlet. 8' long cord and plug set included.

### ELECTRICAL CONNECTION

Units pre-wired at factory and include 8' long cord and plug



Item No. \_\_\_\_\_  
Quantity \_\_\_\_\_

## UNDERCOUNTER REFRIGERATORS WITH DRAWERS UCRD 32" DEPTH SERIES

MODELS:  
UCRD46A  
UCRD67A  
UCRD93A  
UCRD119A



UCRD67A-2



UCRD93A-2

Available From:



\*Note: Not all markings may apply to all model variations.

Model Specified \_\_\_\_\_

Store# \_\_\_\_\_

Location \_\_\_\_\_

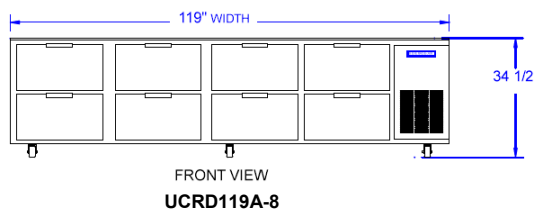
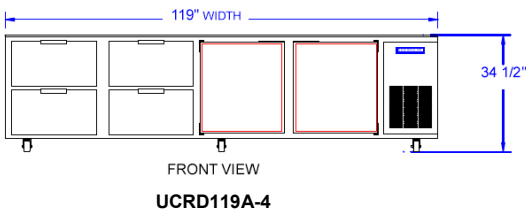
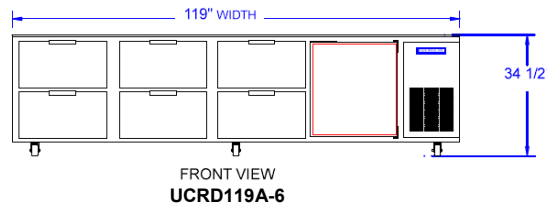
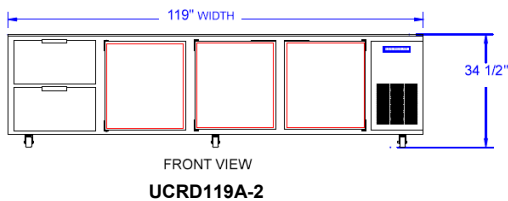
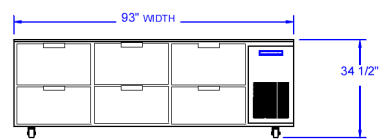
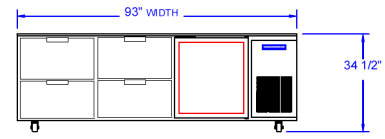
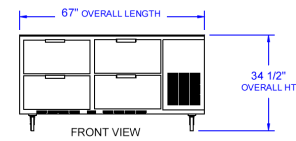
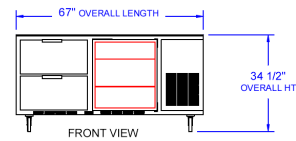
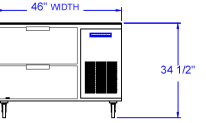
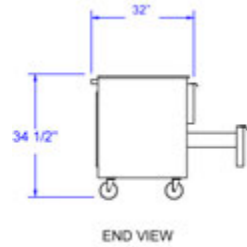
Quantity \_\_\_\_\_



**Undercounter Refrigerator With Drawers**  
**Models: UCRD46A, UCRD67A, UCRD93A, UCRD119A**

**PLAN VIEWS**

MODEL	UCRD46A-2	UCRD67A-2	UCRD67A-4	UCRD93A-2	UCRD93A-4	UCRD93A-6	UCRD119A-2	UCRD119A-4	UCRD119A-6	UCRD119A-8
<b>EXTERNAL DIMENSIONAL DATA</b>										
Length Overall (inches)	46"	67"	67"	93"	93"	93"	119"	119"	119"	119"
Length Overall (mm)	1168	1702	1702	2362	2362	2362	3023	3023	3023	3023
Depth Overall (inches)	32"	32"	32"	32"	32"	32"	32"	32"	32"	32"
Depth Overall (mm)	813	813	813	813	813	813	813	813	813	813
Height Overall—(inches)	34 1/2"	34 1/2"	34 1/2"	34 1/2"	34 1/2"	34 1/2"	34 1/2"	34 1/2"	34 1/2"	34 1/2"
Height Overall—(mm)	876	876	876	876	876	876	876	876	876	876
Number of doors	-	1	-	2	1	-	3	2	1	-
Number of drawers	2	2	4	2	4	6	2	4	6	8
Drawer Extension (when opened)	23"	23"	23"	23"	23"	23"	23"	23"	23"	23"
<b>INTERNAL DIMENSIONAL DATA</b>										
NET Capacity (cubic ft.)	16.7	27	27	39.8	39.8	39.8	52.5	52.5	52.5	52.5
NET Capacity (Liters)	473	765	765	1127	1127	1127	1487	1487	1487	1487
Internal Length Overall (inches)	22"	48"	48"	74"	74"	74"	100"	100"	100"	100"
Internal Length Overall (mm)	559	1219	1219	1880	1880	1880	2540	2540	2540	2540
Internal Depth Overall (inches)	28"	28"	28"	28"	28"	28"	28"	28"	28"	28"
Internal Depth Overall (mm)	711	711	711	711	711	711	711	711	711	711
Internal Height Overall—(inches)	24"	24"	24"	24"	24"	24"	24"	24"	24"	24"
Internal Height Overall—(mm)	610	610	610	610	610	610	610	610	610	610
Number of shelves	-	2	-	4	2	-	6	4	2	-
<b>ELECTRICAL DATA</b>										
Full Load Amperes 115/60/1	6.3	6.3	6.3	8.6	8.6	8.6	8.6	8.6	8.6	8.6
<b>REFRIGERATION DATA</b>										
Horsepower	1/4	1/4	1/4	1/3	1/3	1/3	1/3	1/3	1/3	1/3
<b>WEIGHT DATA</b>										
Gross Weight (Crated lbs)	180	342	342	442	442	535	535	535	535	535
Gross Weight (Crated kg)	82	155	155	201	201	243	243	243	243	243



Note: Not all markings may apply to all model variations.

\*N/A:: Not available at time of printing.

**BEVERAGE-AIR® CORPORATION**

3779 Champion Blvd. • Winston-Salem, NC 27105 USA • (336) 245-6400 • Fax (336) 245-6453 • (888) 845-9800 • www.beverage-air.com

Specifications are subject to change without prior notice. 06/10  
 Central Restaurant Products