



"Your Solutions Partner"

Specifications

F.O.B. Sedalia, Missouri 65301



304

OPTIONS:

- Safety pilots
- Stainless steel liner - **FMOD-SS-LINER**
- Stainless steel feet - **SS-FEET**
- Adapter plates - **31, 32, 33**
- Insets/Inset Covers - **521, 522, 523**
- Telescope cover - **546, 548**
- Spillage pans - **576, 676**
- Stainless steel cutting board in lieu of poly
- Hardwood cutting board in lieu of poly
- Drop type brackets for cutting board
- Standard serving shelf - **656-x**
- Deluxe serving shelf - **956-x**
- Standard buffet shelf - **63x**
- Deluxe buffet shelf - **83x**
- 3-bar tray slide - **3BTS-x**
- Stainless steel dish shelf under cutting board - **441S-x**

AGENCY LISTINGS:



DUKE MANUFACTURING CO.
2305 N. Broadway
St. Louis, MO 63102

800.735.3853 Toll Free
314.231.1130 In Missouri
314.231.5074 Fax
www.dukemfg.com

Approval Stamp(s):

PROJECT INFORMATION:

PROJECT: _____
 ITEM: _____
 QUANTITY: _____

MODEL:

AeroHot Steamtables Hot Food Units - Gas

- 302** 2 openings
- 303** 3 openings
- 304** 4 openings
- 305** 5 openings

TOP:

- 20 gauge, 300 Series stainless steel
- Die-stamped openings - 12-1/16" x 20-1/16"
- Poly carving board - 7"W x 1/2" thick with 18 ga. stainless steel support base and die-stamped brackets

HEAT COMPARTMENTS:

- Die-formed galvanized steel - 8" deep
- Insulated on all four sides and bottom with fiberglass

BODY, UNDERSHELF AND LEGS:

- 20 gauge, 430 Series stainless steel body
- 18 gauge, 430 Series stainless steel undershelf
- 430 Series stainless steel tubular legs with adjustable plastic feet

CONTROLS:

- Natural or Propane, as specified
- Galvanized steel radiation plate in each compartment
- Gas pressure regulator furnished in each unit
- Burners controlled by adjustable valve

SHORT FORM SPECIFICATIONS:

Duke AeroHot Steamtables - Hot Food Units - Gas. Top shall be heavy gauge, 300 Series stainless steel, with body, undershelf and legs formed of heavy gauge, 430 Series stainless steel. Top shall have die-stamped openings measuring 12-1/16" x 20-1/16". Units to be furnished with polycarbonate carving board measuring 7" x 1/2" thick with 18 gauge stainless steel support base and die-stamped brackets. Die-formed heat compartments, 8" galvanized liner, each insulated on all four (4) sides and bottom with 1" thick fiberglass or equal, with thermal conductivity of 0.27 or less. Each compartment shall have individual burner rated at 3500 BTU for natural or propane. Burners controlled by adjustable valve. Galvanized radiation plate in each compartment and gas pressure regulator to be furnished. Unit shipped semi-knocked down.

NOT AVAILABLE ON CASTERS. • SPECIFY NATURAL OR PROPANE

Aerohot®

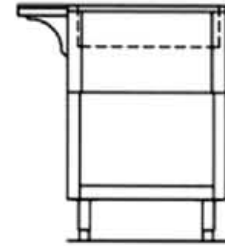
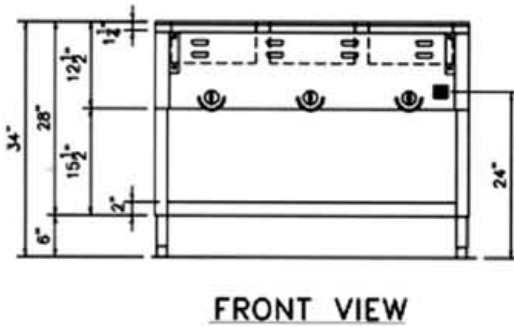
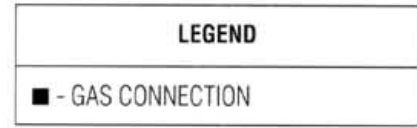
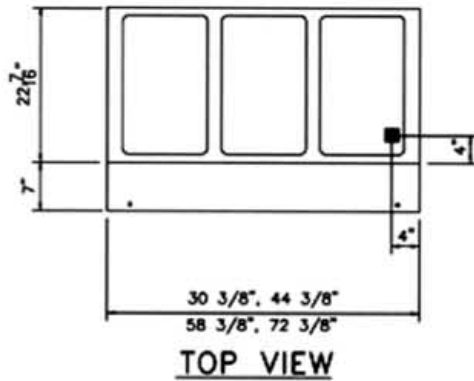
AEROHOT STEAMTABLES HOT FOOD UNITS - GAS

- 302** 2 openings
- 303** 3 openings
- 304** 4 openings
- 305** 5 openings

A.I.A. File No. 35-C-13

Catalog No. AFS-GASHOT

AEROHOT STEAMTABLES - HOT FOOD UNITS - GAS



DIMENSIONS:

Freight Class: 85

Model	Length		Width		Height		Top Openings	Cube ft. crated	Weight	
	in.	cm	in.	cm	in.	cm			lbs.	kg
302	30-3/8	77.2	22-7/16	57.1	34	86.4	2	23.4	92	41.8
303	44-3/8	112.8	22-7/16	57.1	34	86.4	3	32.5	109	49.6
304	58-3/8	148.3	22-7/16	57.1	34	86.4	4	41.5	139	63.2
305	72-3/8	183.9	22-7/16	57.1	34	86.4	5	50.5	166	75.5

POWER SUPPLY: High altitude orifice available - specify elevation. SPECIFY NATURAL OR PROPANE.

Model	# Burners	Total BTU
302	2	7,000
303	3	10,500
304	4	14,000
305	5	17,500

NOTE: No combustible materials should be stored on bottom shelf. NOT AVAILABLE IN PORTABLE MODELS.



DUKE MANUFACTURING CO.
2305 N. Broadway
St. Louis, MO 63102

800.735.3853 Toll Free
314.231.1130 In Missouri
314.231.5074 Fax
www.dukemfg.com

"Your Solutions Partner"

03/03