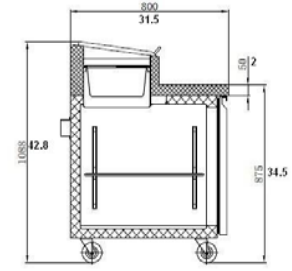
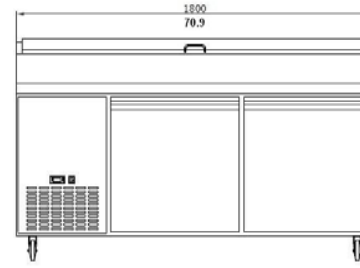




\* CONFORMS TO UL STD. 471  
 \* CERTIFIED TO CSA STD. C22.2 NO.120  
 \* CONFORMS TO NSF/ANSI STD.7

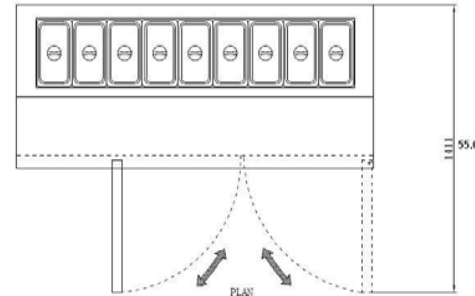
## PICL2-67

- **Stainless steel interior and exterior** retains attractive finish longer. Matching aluminium finished back
- **Rounded corner** design inside of the cabinet makes it easy to clean the inside storage room
- **Standard door features:**  
 Positive seal self-closing door(s) with 90° stay open feature.  
 Magnetic door gasket(s) removable without tools for easy of cleaning
- **Refrigeration system** holds 33°F to 41°F (0.5°C to 5°C) for the best in food preservation.
- **Electronic control system:**  
 Adjustable temperature set point and defrost frequency  
 Error codes to diagnose service issues
- **Shelf:** Adjustable, heavy duty PVC coated shelves.
- **Standard heavy-duty casters** make it easy to move and clean underneath
- **Condensing unit** access in front of cabinet, slides out for easy maintenance
- **Insulated lid** on prep units helps maintain food freshness.



ELEVATION

SECTION VIEW



PLAN

Specifications subject to change without notice.

Chart dimensions rounded up to the nearest 1/8" (millimeters rounded up to next whole number).

Model	Doors	Shelves	Cabinet Dimensions (inches)			CAP. CU.FT	HP	Voltage	Amps	NEMA Config.
			L	D	H					
PICL2-67	2	2	67 1701	31.5 800	42.8 1088	16.9 477	1/3+	115/60/1	9.8	5-15P

Plug type varies by country.

### PAN LAYOUTS

9 (pcs) 1/3 pans

