



"SNS" Maple Top Work Tables

w/ 1 3/4" thick Hard Rock Maple Top
w/ Stainless Steel Base and Undershef



1-3/4" MAPLE TOP w/ UNDERSHELF					
24"WIDE	Qty	30"WIDE	Qty	36"WIDE	Qty
SNS01		SNS07		SNS13	
SNS02		SNS08		SNS14	
SNS03		SNS09		SNS15	
SNS04		SNS10		SNS16	
SNS04A		SNS10A		SNS16A	
SNS05		SNS11		SNS17	
SNS05A		SNS11A		SNS17A	
SNS06		SNS12		SNS18	

FEATURES:

- * 1 3/4" Thick Hard Rock Maple Top
top style "SC" flat top
- * Maple top is finished with penetrating oil
with optional natural clear Varnique Finish
- * Stainless Steel Base and Undershef,
Type 300 stainless steel with # 3 polish, satin finish
- * Undershef is secured in a fixed position, 12" above floor
- * Adjustable bullet feet
- * Shipped knocked-down, easy - to - assemble
- * Optional drawers, casters, pot racks, etc. available
- * All models are approved by the National Sanitation Foundation

MATERIAL:

Top: Laminated Hard Rock Maple
 Shelf: 18 gauge type 300 stainless steel, # 3 polish, satin finish.
 ** 6 ft. table only, 16 gauge type 300 stainless steel
 #3 polish, satin finish
 Legs: 1 5/8" Round O.D., 16 gauge type 300 tubular stainless steel
 # 3 polish, satin finish
 Gussets: Stainless Steel
 Feet: 1" adjustable stainless steel bullet feet

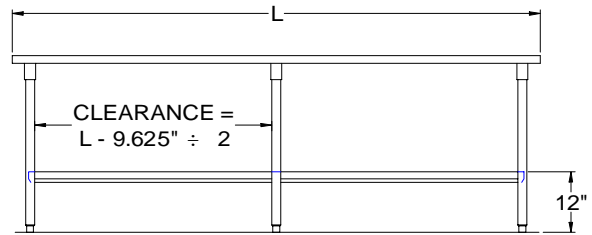
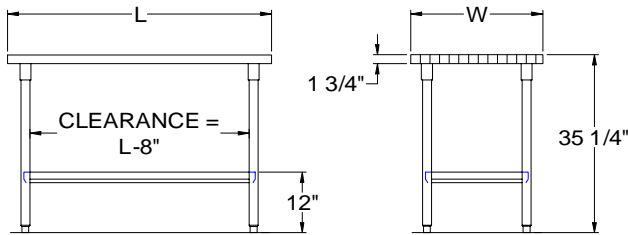
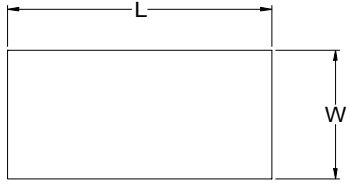
OPTIONAL ACCESSORIES

	MODEL #	Qty
STAINLESS STEEL FEET		
DRAWER		
DRAWER LOCK		
ADJUSTABLE SHELF		
CASTERS		
OVERSHELVES		
POT RACK		

John Boos & Co

315 South First Street - Effingham, IL 62401
 Phone: 217-347-7701 - Fax: 217-347-7705
 Email: sales@johnboos.com - Web-site: www. johnboos.com

DETAILED SPECIFICATIONS



All units ship unassembled for reduced shipping cost.
 Units 7 ft. and larger are furnished with six legs.
 All dimensions are typical.
 Tolerance +/- .500".

Finished size of undershelf.
 Shelf length = length minus 4.875"
 Shelf width = width minus 4.25"

1-3/4" MAPLE TOP & UNDERSHELF

L	24" WIDE	WT.	30" WIDE	WT.	36" WIDE	WT.
36	SNS01	72	SNS07	86	SNS13	99
48	SNS02	90	SNS08	109	SNS14	127
60	SNS03	109	SNS09	131	SNS15	154
72	SNS04	127	SNS10	154	SNS16	182
84	SNS04A	145	SNS10A	173	SNS16A	209
96	SNS05	163	SNS11	192	SNS17	236
108	SNS05A	186	SNS11A	224	SNS17A	268
120	SNS06	208	SNS12	255	SNS18	300

John Boos & Co

315 South First - Effingham, IL 62401 Phone: 217-347-7701 - Fax: 217-347-7705
 Email: sales@johnboos.com - Web-site: www.johnboos.com



March 2009

John Boos is constantly engaged in a program of improving products and therefore reserves the right to change specification without prior notice