



# BEVERAGE-AIR

PO Box 5932, Spartanburg, SC 29304  
1-888-845-9800 Fax# 1-864-582-5083  
<http://www.Beverage-Air.com>

## Commercial Refrigeration Equipment General Specification

### WTRD SERIES—32" DEPTH

Versatile, compact (32" depth) models with stainless steel work tops and built-in backsplash for refrigerated storage of food products. Working height is 35 1/2".

### CABINET CONSTRUCTION

Heavy duty construction includes exterior stainless steel on front, sides, door(s) and grille. Cabinet back and bottom are galvanized steel. Interior liner is made of corrosion resistant anodized aluminum. Interior thermometer is standard.

In cabinets with doors and drawers, doors are mounted to face of cabinet on cartridge-style hinges permitting them to self close under their own weight. Hinges also allow doors to stay open 120° and permit easy door removal for service and cleaning if required. A plug-in type vinyl magnetic gasket is attached to each door for positive seal.

Cabinet insulation is CFC and HCFC-free foamed-in-place polyurethane of two-inch minimum thickness. Units are supplied with 6" high casters. Front casters have wheel locking mechanism.

### DRAWER CONSTRUCTION

Drawer frames are constructed of heavy-duty stainless steel. Telescoping design slides make opening drawers smooth and easy. Heavy duty construction ensures maximum support of stored food products. Slides have locking mechanism to prevent drawers from being pulled off of cabinets. For your convenience, drawers accommodate 6" or 4" deep pans. Heavy-duty pan divider supports are supplied. Foodservice pans for drawers are not included. Snap-type vinyl magnetic gasket is attached to each drawer for positive seal. Drawers extend 23" (when opened).

### REFRIGERATION

Robust and balanced refrigeration system ensures that food stays fresh for a longer period of time. Optimum air flow inside cabinet helps in keeping uniform temperature within the cabinet. Refrigeration system uses environment friendly R134a refrigerant which is CFC and HCFC-free. Design utilizes automatic condensate removal process.

### ELECTRICAL

Units wired at factory and ready for connection to a 115/60/1 phase, 15 amp dedicated outlet. 8' long cord and plug set included.

### ELECTRICAL CONNECTION

Units pre-wired at factory and include 8' long cord and plug



115/60/1  
NEMA-5-15P

Item No. \_\_\_\_\_  
Quantity \_\_\_\_\_

## WORKTOP REFRIGERATORS WITH DRAWERS WTRD 32" DEPTH SERIES

MODELS:  
WTRD46A  
WTRD67A  
WTRD93A  
WTRD119A



WTRD67A-2

Available From:



\*Note: Not all markings may apply to all model variations.

Model Specified \_\_\_\_\_

Store# \_\_\_\_\_

Location \_\_\_\_\_

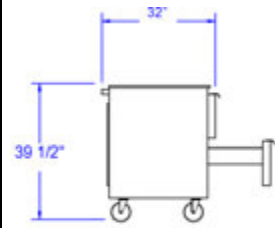
Quantity \_\_\_\_\_



**Worktop Refrigerator With Drawers**  
**Models: WTRD46A, WTRD67A, WTRD93A, WTRD119A**

MODEL	WTRD46A-2	WTRD67A-2	WTRD67A-4	WTRD93A-2	WTRD93A-4	WTRD93A-6	WTRD119A-2	WTRD119A-4	WTRD119A-6	WTRD119A-8
<b>EXTERNAL DIMENSIONAL DATA</b>										
Length Overall (inches)	46"	67"	67"	93"	93"	93"	119"	119"	119"	119"
Length Overall (mm)	1168	1702	1702	2362	2362	2362	3023	3023	3023	3023
Depth Overall (inches)	32"	32"	32"	32"	32"	32"	32"	32"	32"	32"
Depth Overall (mm)	813	813	813	813	813	813	813	813	813	813
Height Overall—(inches)	39 1/2"	39 1/2"	39 1/2"	39 1/2"	39 1/2"	39 1/2"	39 1/2"	39 1/2"	39 1/2"	39 1/2"
Height Overall—(mm)	1003	1003	1003	1003	1003	1003	1003	1003	1003	1003
Number of doors	-	1	-	2	1	-	3	2	1	-
Number of drawers	2	2	4	2	4	6	2	4	6	8
Drawer Extension (when opened)	23"	23"	23"	23"	23"	23"	23"	23"	23"	23"
<b>INTERNAL DIMENSIONAL DATA</b>										
NET Capacity (cubic ft.)	16.7	27	27	39.8	39.8	39.8	52.5	52.5	52.5	52.5
NET Capacity (Liters)	473	765	765	1127	1127	1127	1487	1487	1487	1487
Internal Length Overall (inches)	22"	48"	48"	74"	74"	74"	100"	100"	100"	100"
Internal Length Overall (mm)	559	1219	1219	1880	1880	1880	2540	2540	2540	2540
Internal Depth Overall (inches)	28"	28"	28"	28"	28"	28"	28"	28"	28"	28"
Internal Depth Overall (mm)	711	711	711	711	711	711	711	711	711	711
Internal Height Overall—(inches)	24"	24"	24"	24"	24"	24"	24"	24"	24"	24"
Internal Height Overall—(mm)	610	610	610	610	610	610	610	610	610	610
Number of shelves	-	2	-	4	2	-	6	4	2	-
<b>ELECTRICAL DATA</b>										
Full Load Amperes 115/60/1	6.3	6.3	6.3	8.6	8.6	8.6	8.6	8.6	8.6	8.6
<b>REFRIGERATION DATA</b>										
Horsepower	1/4	1/4	1/4	1/3	1/3	1/3	1/3	1/3	1/3	1/3
<b>WEIGHT DATA</b>										
Gross Weight (Crated lbs)	296	410	410	486	486	486	604	604	604	604
Gross Weight (Crated kg)	134	186	186	221	221	221	274	274	274	274

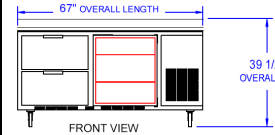
**PLAN VIEWS**



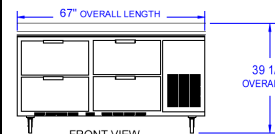
END VIEW



FRONT VIEW  
**WTRD46A-2**



FRONT VIEW  
**WTRD67A-2**

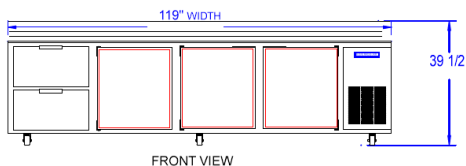


FRONT VIEW  
**WTRD67A-4**

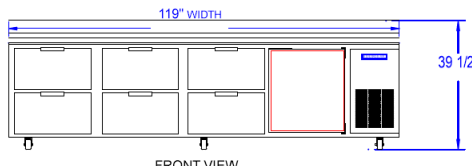


Note: Not all markings may apply to all model variations.

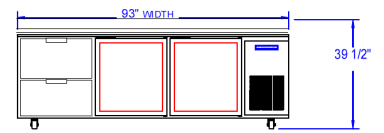
\*N/A:: Not available at time of printing.



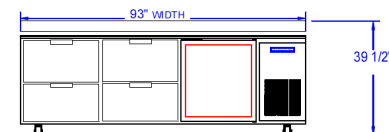
FRONT VIEW  
**WTRD119A-2**



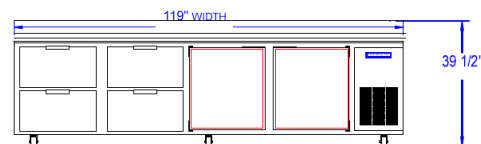
FRONT VIEW  
**WTRD119A-6**



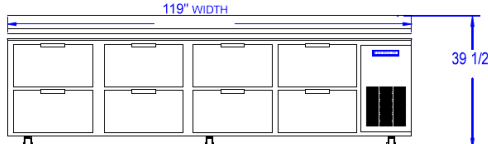
FRONT VIEW  
**WTRD93A-2**



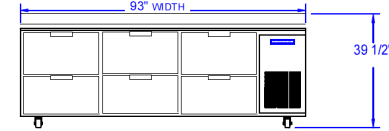
FRONT VIEW  
**WTRD93A-4**



FRONT VIEW  
**WTRD119A-4**



FRONT VIEW  
**WTRD119A-8**



FRONT VIEW  
**WTRD93A-6**

**BEVERAGE-AIR® CORPORATION**

700 Buffington Road • PO Box 5932 • Spartanburg, SC 29304 USA • (864) 582-8111 • Fax (864) 582-5083 • (888) 845-9800 • www.beverage-air.com

Specifications are subject to change without prior notice. 07/09