

Project	Quantity	Item #
Model Specified:		CSI Section 11400

Refrigerated & Heated Storage Equipment For Corrections Applications



Includes Traulsen's patented
INTELA-TRAUL® control



Model RW132W-001
(1-section reach-in hot food holding cabinet)



Stainless Exterior
& Interior

Correctional Offering Summary

- 1 & 2 Section Reach-In Refrigerator Models
- 1 & 2 Section Pass-Thru Refrigerator Models
- 1 & 2 Section Roll-In Refrigerator Models
- 1 & 2 Section Roll-Thru Refrigerator Models
- 1 & 2 Section Reach-In Freezer Models
- 1 & 2 Section Reach-In Hot Food Holding Cabinets
- 1 & 2 Section Pass-Thru Holding Cabinets
- 1 & 2 Section Roll-In Holding Cabinets
- 1 & 2 Section Roll-Thru Holding Cabinets

Traulsen's already durable, energy efficient R-Series reach-in-pass-thru and roll-in/roll-thru models are available already built with all the features needed for use in a corrections environment.

These reliable models are optimized for the demanding needs of all security levels, and each is built with microprocessor controls, communications ability and stainless steel cabinet interior/exterior construction.

The correctional package is designed to protect the cabinet from unwanted damage/vandalism, removal of contents or components, as well as from being pushed over (see details below).

Three section, as well as models with half-height doors and other hinges are also available upon request.

Standard Refrigerator/Freezer Features

- Stainless Steel Exterior & Interior
- INTELA-TRAUL® Microprocessor Control System
- Balanced, Self-Contained Refrigeration System
- Scroll Blower Type Evaporator Fan & Biased Return Air Duct
- Full Length Stainless Steel Doors
- Self-Closing Doors With Stay Open Feature At 120 Degrees
- Guaranteed For Life Cam-Lift Hinges & Door Handles
- Automatically Activated Incandescent Lights
- Stainless Steel Breaker Caps
- Automatic Non-Electric Condensate Evaporator
- Magnetic Snap-In Door Gaskets
- Gasket Protecting Metal Door Liners (reach-in/pass-thru models only)
- Controllable Anti-Condensate Door Perimeter Heaters
- Thermostatic Expansion Valve Metering Device
- One Year Parts And Labor Warranty
- Two Year Control Warranty (parts and labor)
- Five Year Compressor Warranty

Standard Hot Food Cabinet Features

- Stainless Steel Exterior & Interior
- INTELA-TRAUL® Microprocessor Control System
- Ducted Fan Air Distribution System
- Standard Operating Temperature Range 135 to 180°F
- One-Time Start-Up Temperature Adjustment Feature
- ON/OFF Switch Located On Control Face
- Full Length Stainless Steel Doors
- Self-Closing Doors With Stay Open Feature At 120 Degrees
- Guaranteed For Life Cam-Lift Hinges & Handles
- Automatically Activated Incandescent Lights
- Stainless Steel Breaker Caps
- Special Heat Resistant Magnetic Snap-In Door Gaskets
- Gasket Protecting Metal Door Liners (reach-in/pass-thru models only)
- One Year Parts And Labor Warranty
- Two Year Control Warranty (parts and labor)

Corrections Feature Package

- Lexan Control Cover Protects This From Damage While Allowing Full Visibility & Use
- Stainless Steel Screen Protects The Refrigeration System From Damage or Unwanted Removal of Components
- Use of Safety Screws Throughout Secures All Cabinet Components From Unwanted Removal
- Locking Hasps Secure Cabinet Contents (padlocks supplied by others)
- No Hinge or Light Covers
- 13 Pairs Universal Type Tray Slides Welded To A Steel Frame Per Section To Accommodate Either (1) 18" x 26" or (2) 14" x 18" Pans, or (2) 12" x 20" Pans (reach-in/pass-thru models only)
- 6" High Stainless Steel Flanged Legs To Allow For Secure Mounting To Floor (reach-in/pass-thru models only)

1= Traulsen recommends use of tray slides for all correctional applications



Listed by Underwriters Laboratories Inc.,
to U.S. and Canadian safety standards and
Listed by NSF International.

Approval: _____



TRAULSEN
4401 BLUE MOUND RD.
PHONE 1 (800) 825-8220
Website: www.traulsen.com

FT. WORTH, TX 76106
FAX-MKTG. 1 (817) 624-4302

Project	Quantity	Item #
Model Specified:		CSI Section 11400

Device Legend

Device	Description	Hinging
RH132N-COR01	26-3/8" Wide Reach-In Refrigerator	L
RH132N-COR02	26-3/8" Wide Reach-In Refrigerator	R
RH132NP-COR01	26-3/8" Wide Pass-Thru Refrigerator	FHR/RHR
RH132NP-COR02	26-3/8" Wide Pass-Thru Refrigerator	FHL/RHL
RH232N-COR01	52-1/8" Wide Reach-In Refrigerator	L/R
RH232NP-COR01	52-1/8" Wide Pass-Thru Refrigerator	FHS/RHS

Device	Description	Hinging
RL132N-COR01	26-3/8" Wide Reach-In Freezer	L
RL132N-COR02	26-3/8" Wide Reach-In Freezer	R
RL232N-COR01	52-1/8" Wide Reach-In Freezer	L/R

Device	Description	Hinging
RW132W-COR01	29-7/8" Wide Reach-In Hot Food	L
RW132W-COR02	29-7/8" Wide Reach-In Hot Food	R
RW132WP-COR01	29-7/8" Wide Pass-Thru Hot Food	FHR/RHR
RW132WP-COR02	26-7/8" Wide Pass-Thru Hot Food	FHL/RHL
RW232W-COR01	58" Wide Reach-In Hot Food	L/R
RW232WP-COR01	58" Wide Pass-Thru Hot Food	FHS/RHS

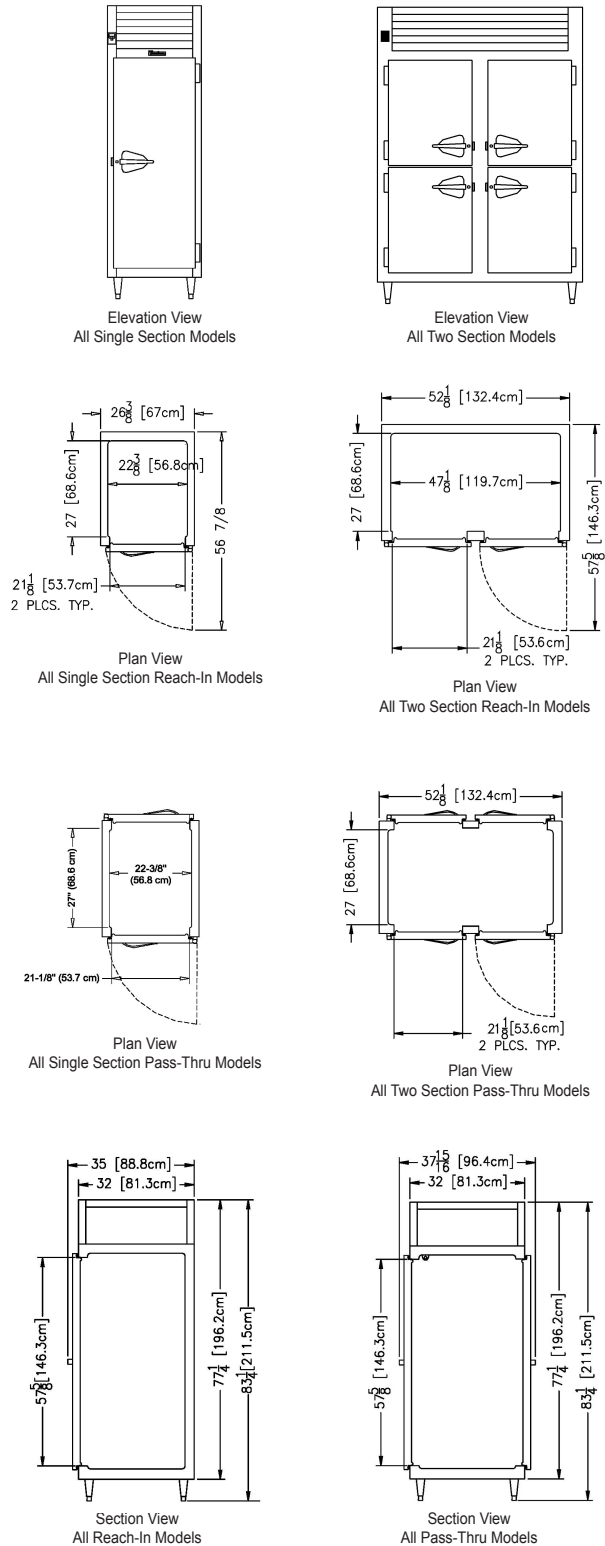
Device	Description	Hinging
RR132L-COR01	35-1/2" Wide Roll-In Refrigerator	L
RR132L-COR02	35-1/2" Wide Roll-In Refrigerator	R
RR132LP-COR01	35-1/2" Wide Roll-Thru Refrigerator	FHR/RHR
RR132LP-COR02	35-1/2" Wide Roll-Thru Refrigerator	FHL/RHL
RR232L-COR01	58" Wide Roll-In Refrigerator	L/R
RR232LP-COR01	58" Wide Roll-Thru Refrigerator	FHS/RHS

Device	Description	Hinging
RI132L-COR01	35-1/2" Wide Roll-In Hot Food	L
RI132L-COR02	35-1/2" Wide Roll-In Hot Food	R
RI132LP-COR01	35-1/2" Wide Roll-Thru Hot Food	FHR/RHR
RI132LP-COR02	35-1/2" Wide Roll-Thru Hot Food	FHL/RHL
RI232L-COR01	58" Wide Roll-In Hot Food	L/R
RI232LP-COR01	58" Wide Roll-Thru Hot Food	FHS/RHS

Door Hinging Legend

- L = Left
- R = Right
- L/R = Left Door Hinged Left/Right Door Hinged Right
- FHL/FHL = Control Side Hinged Left/Other Side Hinged Left
- FHR/FHR = Control Side Hinged Right/Other Side Hinged Right
- FHS/FHS = Control Side Hinged Left/Right/Other Side Hinged Left/Right

Reach-In & Pass-Thru Refrigerator & Freezer Models



Project

Quantity

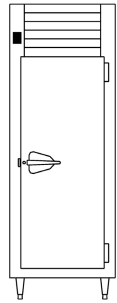
Item #

Model Specified:

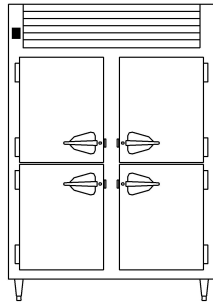
CSI Section 11400

Reach-In & Pass-Thru Hot Food Cabinets

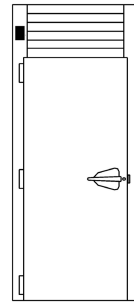
Roll-In & Roll-Thru Models



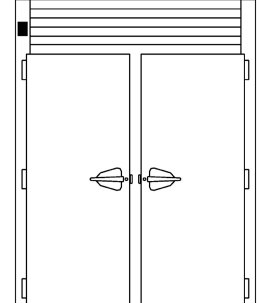
Elevation View
All Single Section Models



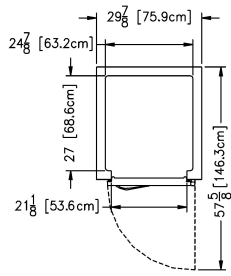
Elevation View
All Two Section Models



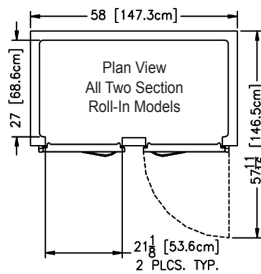
Elevation View
All Single Section Models



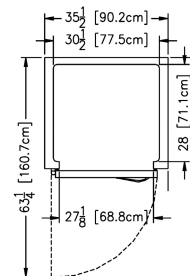
Elevation View
All Two Section Models



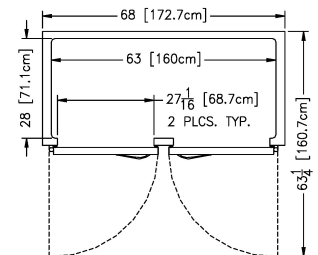
Plan View
All Single Section Reach-In Models



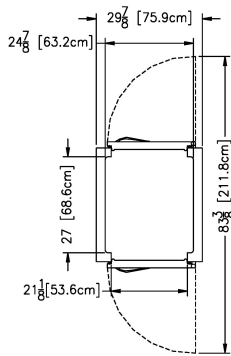
Plan View
All Two Section Reach-In Models



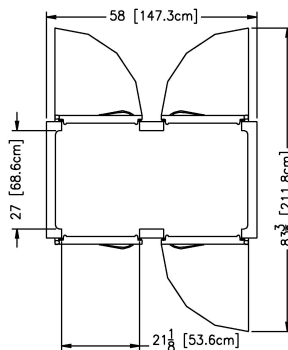
Plan View
All Single Section Roll-In Models



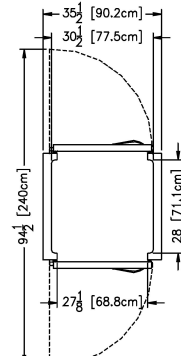
Plan View
All Two Section Roll-In Models



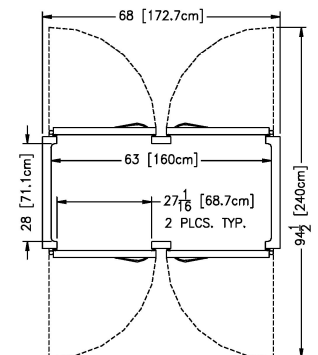
Plan View
All Single Section Pass-Thru Models



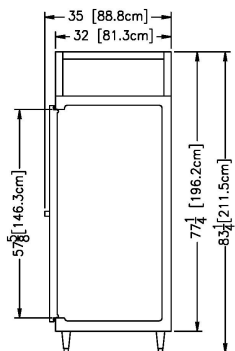
Plan View
All Two Section Pass-Thru Models



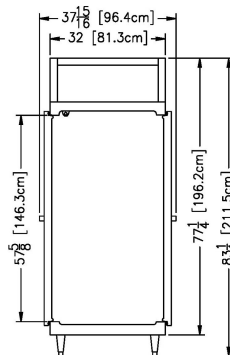
Plan View
All Single Section Roll-Thru Models



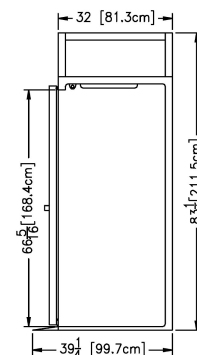
Plan View
All Two Section Roll-Thru Models



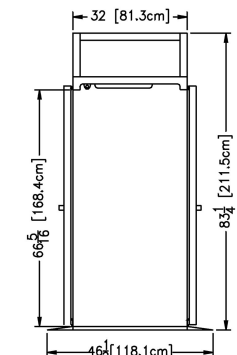
Section View
All Reach-In Models



Section View
All Pass-Thru Models



Section View
All Single Section Roll-In Models



Section View
All Two Section Roll-Thru Models



TRAUlsen
4401 BLUE MOUND RD.
PHONE 1 (800) 825-8220
Website: www.traulsen.com

FT. WORTH, TX 76106
FAX-MKTG. 1 (817) 624-4302

Project

Quantity

Item #

Model Specified:

CSI Section 11400

Specifications

Construction, Hardware and Insulation

Cabinet exterior, interior, louver assembly and doors are constructed of stainless steel. The exterior cabinet top, back and bottom are constructed of heavy gauge aluminized steel. On roll-in/roll-thru models the interior floor and exterior bottom are constructed of stainless steel and insulated with ¾" of resilient cork (a readily attachable stainless steel ramp is also provided). A set of four (4) adjustable 6" high stainless steel flanged legs are included to provide for secure mounting to the floor (reach-in/pass-thru models only).

Doors are provided with locking hasps and equipped with a gasket protecting metal door pan (reach-in/pass-thru models only), removable plug cylinder locks and guaranteed for life cam-lift, gravity action, self-closing metal, glide hinges with stay open feature at 120 degrees. Hinges include a concealed switch to automatically activate the interior incandescent lighting. Guaranteed for life, work flow door handles are mounted horizontally over recess in door which limits protrusion from door face into aiseways.

Safety screws are used throughout the cabinet in order to prevent removal with anything but a very specialized tool. Easily removable for cleaning, vinyl magnetic door gaskets assure tight door seal. Anti condensate heaters are located behind each door opening (refrigerator & freezer models only).

Both the cabinet and door(s) are insulated with an average of 2" thick high density, non-CFC, foamed in place polyurethane.

Controller

The easy to use water resistant INTELA-TRAUL® microprocessor control system is supplied standard. Unit is NAFEM Data Protocol communication (NDP) ready. Optional hardware required to be NDP compliant. Third party software required for network connection. It includes a 3-Digit LED Display, Fahrenheit or Celsius Temperature Scale Display Capability, and an RS485 data port. In addition it includes, where applicable, audio/visual alarms for: Hi/Lo Cabinet Temperature, Door Open, Clean Condenser, Evaporator Coil and Discharge Line Sensor Failures, and Power Supply Interruption. Hot food holding cabinet models also include an ON/OFF button. The control is protected behind a high-impact resistant lexan cover.

Refrigeration System (refrigerator & freezer models only)

A top mounted, self-contained, balanced refrigeration system using either R-134a (refrigerators) or R-404A (freezers) refrigerant is conveniently located behind the one piece louver assembly, and protected behind a heavy gauge stainless steel mesh screen. It features an easy to clean front facing condenser, thermostatic expansion valve, air-cooled hermetic compressor, plenum effect blower coil, large, high humidity evaporator coil located outside the food zone and a top mounted non-electric condensate evaporator. Biased return air duct protects against introduction of warm kitchen air, promoting even temperature maintenance and efficient operation. A 9' cord and plug is provided. Standard operating temperature is 34 to 38°F for refrigerators and 0 to -5°F for freezers.

Heating System (hot food holding cabinets only)

A low watt density, serpentine style, heater is employed for the generation of electric heat. Low velocity air is forced across its large surface area to efficiently move heat radiating away from these through a down-air distribution duct, where it is then evenly distributed throughout the cabinet, assuring the proper holding environment for hot food product, without drying. A vent, located at the top of the cabinet, is included for positive humidity control.

Reach-in/Pass-Thru Model Interior

Standard interior arrangements include 13 pairs of universal tray slides per section, welded to a steel frame in order to prevent removal.

Roll-In/Roll-Thru Model Interior

Readily removable, interior-mounted, stainless steel guides for rack are provided for protection. Maximum rack size with wheels inboard of frame is 27" wide by 29" deep by 66" high. Racks supplied by others.

Warranties

Both a one year parts and labor warranty and a five year compressor warranty (refrigerator & freezer models only) are provided standard. An optional 2nd year extended parts and labor warranty is also available. In addition the INTELA-TRAUL® control is warranted by a two year parts and labor warranty.

DIMENSIONAL DATA	Cu. Ft.	W x H x D	Weight	Voltage	Amps	Refrigerant	BTU/HR (HP) ¹	Plug
1-Section Reach-In Refrigerator	21.9	26½ x 83¼ x 35	330 Net	115/60/1	6.0	R-134a	1730 (¼ HP)	5-15P
2-Section Reach-In Refrigerator	46.0	52½ x 83¼ x 35	560 Net	115/60/1	10.4	R-134a	4200 (½ HP)	5-15P
1-Section Pass-Thru Refrigerator	22.7	26½ x 83¼ x 37½ ¹⁶	310 Net	115/60/1	6.0	R-134a	1730 (¼ HP)	5-15P
2-Section Pass-Thru Refrigerator	48.3	52½ x 83¼ x 37½ ¹⁶	565 Net	115/60/1	11.0	R-134a	4200 (½ HP)	5-15P
1-Section Reach-in Freezer	21.9	26½ x 83¼ x 35	330 Net	115/60/1	9.8	R-404A	2170 (½ HP)	5-15P
2-Section Reach-In Freezer	46.0	52½ x 83¼ x 35	560 Net	115/60/1	14.9	R-404A	3790 (¼ HP)	5-20P
1-Section Reach-In Heated	24.2	29½ x 83¼ x 35	320 Net	208/115	7.8	n/a	n/a	L14-20P
2-Section Reach-In Heated	46.0	58 x 83¼ x 35	530 Net	208/115	15.5	n/a	n/a	n/a
1-Section Pass-Thru Heated	26.1	29½ x 83¼ x 37½ ¹⁶	345 Net	208/115	7.8	n/a	n/a	L14-20P
2-Section Pass-Thru Heated	55.8	58 x 83¼ x 37½ ¹⁶	585 Net	208/115	15.5	n/a	n/a	n/a
1-Section Roll-In Refrigerator	36.0	35½ x 83¼ x 35½ ¹⁶	435 Net	115/60/1	10.6	R-134a	2220 (½ HP)	5-15P
2-Section Roll-In Refrigerator	74.3	68 x 83¼ x 35½ ¹⁶	700 Net	115/60/1	11.4	R-134a	4200 (½ HP)	5-15P
1-Section Roll-Thru Refrigerator	38.8	35½ x 83¼ x 39½	490 Net	115/60/1	11.6	R-134a	2220 (½ HP)	5-15P
2-Section Roll-Thru Refrigerator	80.2	68 x 83¼ x 39½	775 Net	115/60/1	13.4	R-134a	4200 (½ HP)	5-20P
1-Section Roll-In Heated	36.0	35½ x 83¼ x 35½ ¹⁶	350 Net	208/115	7.8	n/a	n/a	L14-20P
2-Section Roll-In Heated	74.2	68 x 83¼ x 35½ ¹⁶	580 Net	208/115	15.5	n/a	n/a	n/a
1-Section Roll-Thru Heated	38.8	35½ x 83¼ x 39½	375 Net	208/115	7.8	n/a	n/a	L14-20P
2-Section Roll-Thru Heated	80.2	68 x 83¼ x 39½	630 Net	208/115	15.5	n/a	n/a	n/a

NOTES

1= Based on a 90 degree F ambient and 20 degree F evaporator for refrigerator models and 90 degree F ambient and -15 degree F evaporator for freezer models.

REQUIRED CLEARANCES

In order to assure optimum performance, the condensing unit **MUST** have an adequate supply of air for cooling purposes. Therefore, the operating location must either have a minimum of 12" clearance overhead of the condensing unit or allow for unrestricted air flow at the back of the unit. Clearance of at least 12" above is required in order to perform certain maintenance tasks.

NOTE: When ordering please specify: Voltage, Hinging, Door Size, Options and any additional warranties.

Continued product development may necessitate specification changes without notice.

Part No. TR35914 (revised 4/10)

TRAULSEN
4401 BLUE MOUND RD.
PHONE 1 (800) 825-8220
Website: www.traulsen.com

FT. WORTH, TX 76106
FAX-MKTG. 1 (817) 624-4302

Traulsen